



Sydney House, London, W4  
Guide Price £1,200,000

**WHITMAN & CO.**  
SALES · LETTINGS · COMMERCIAL



An exceptionally light period mansion flat, ideally situated in the heart of the Bedford Park Conservation Area, offering convenient access to a wide range of local amenities.

The property features three bedrooms, two reception rooms, a kitchen/breakfast room, a bathroom, a guest cloakroom, and direct access to beautifully landscaped communal gardens.

Further benefits include a share of the freehold with a lease of over 950 years. Ideally located within close proximity to Turnham Green Tube Station and the extensive selection of shops, bars, and restaurants along Chiswick High Road. Offered with no onward chain.



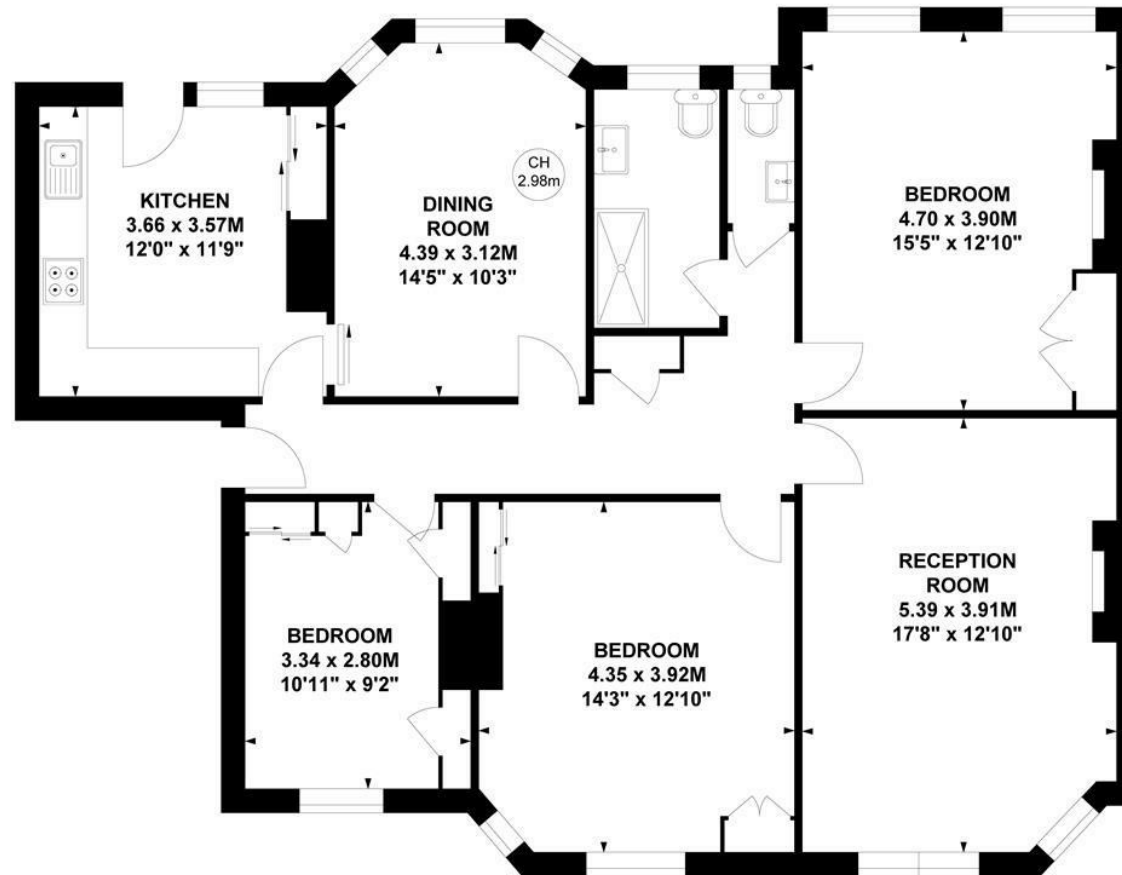
# Sydney House, W4

Approximate Gross Internal Area

112.35 sq m / 1209 sq ft

Key :

CH - Ceiling Height



## Ground Floor

Not to scale, for guidance only and must not be relied upon as a statement of fact.

All measurements and areas are approximate only

- Sought after mansion block
- Direct access to communal garden
- Share of freehold with 950+ year lease

- Ground floor flat
- Bedford Park Conservation Area
- No onward chain

Tenure - Leasehold with a share of freehold  
Lease length - 964 Years remaining  
Ground Rent - peppercorn  
Service Charge - £3,540 pa  
Local authority - Ealing  
Council tax - Band F

